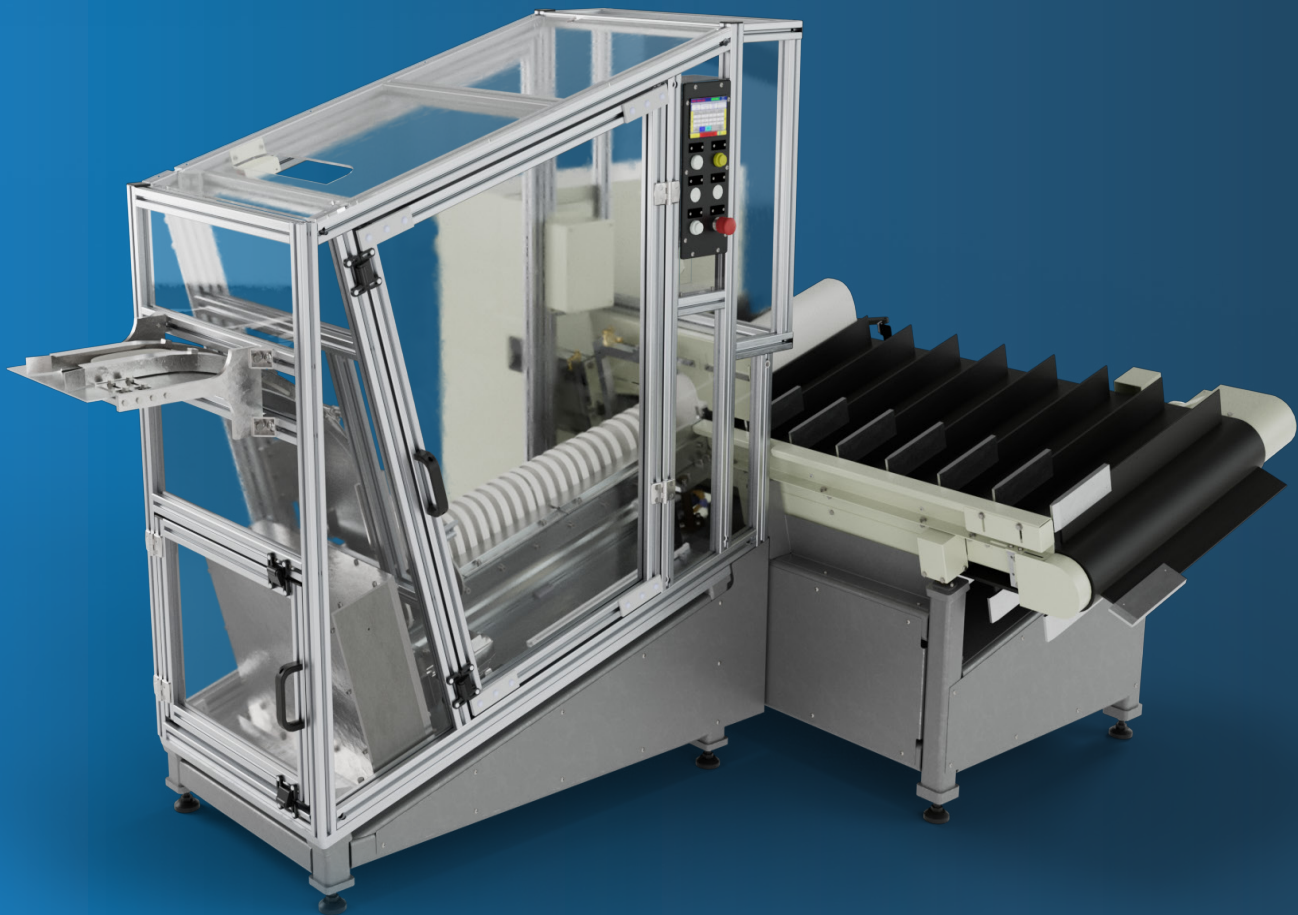




**PAPER
MACHINERY
CORPORATION**

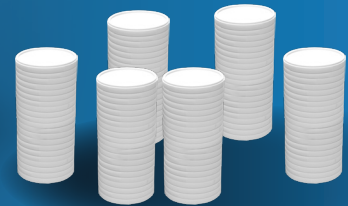
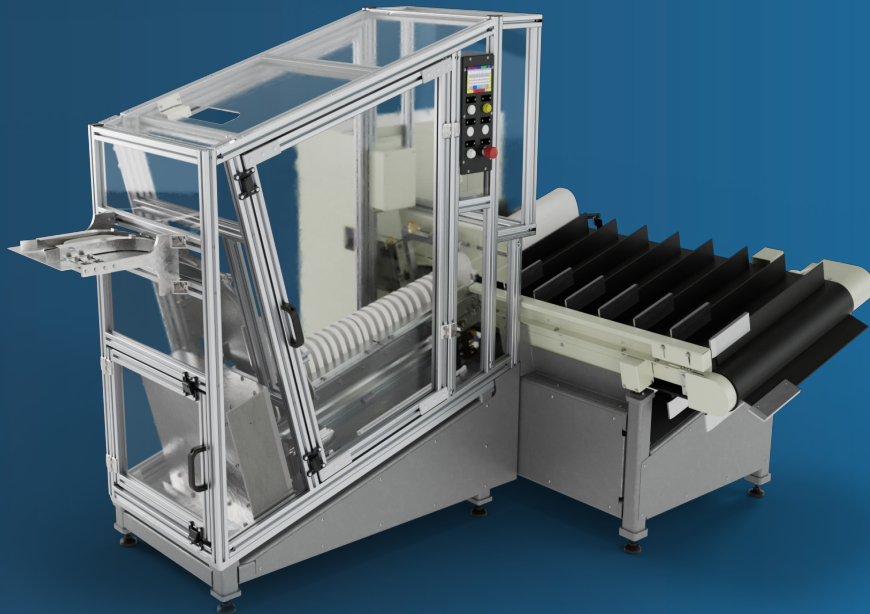
**OUT-STACK THE
COMPETITION**



LS 100

LID STACKING MACHINE

LS 100



MACHINE SPECIFICATIONS

STACK HEIGHT LIDS: 6.8 in - 23.6 in (175 mm to 600 mm)

LID DIAMETER:

Round: 2.5 in (63.5 mm) - 5.3 in (136 mm)
Non-Round: 5.35 in (136 mm) x 7 in (177 mm)

LID HEIGHT RANGE: .47 in (12mm)*

APPROXIMATE MACHINE WEIGHTS:

LID STACKER: 1100 lbs (499 kg)
CONVEYOR: 700 lbs (318 kg)
ELECTRICAL CABINET: 320 lbs (145 kg)

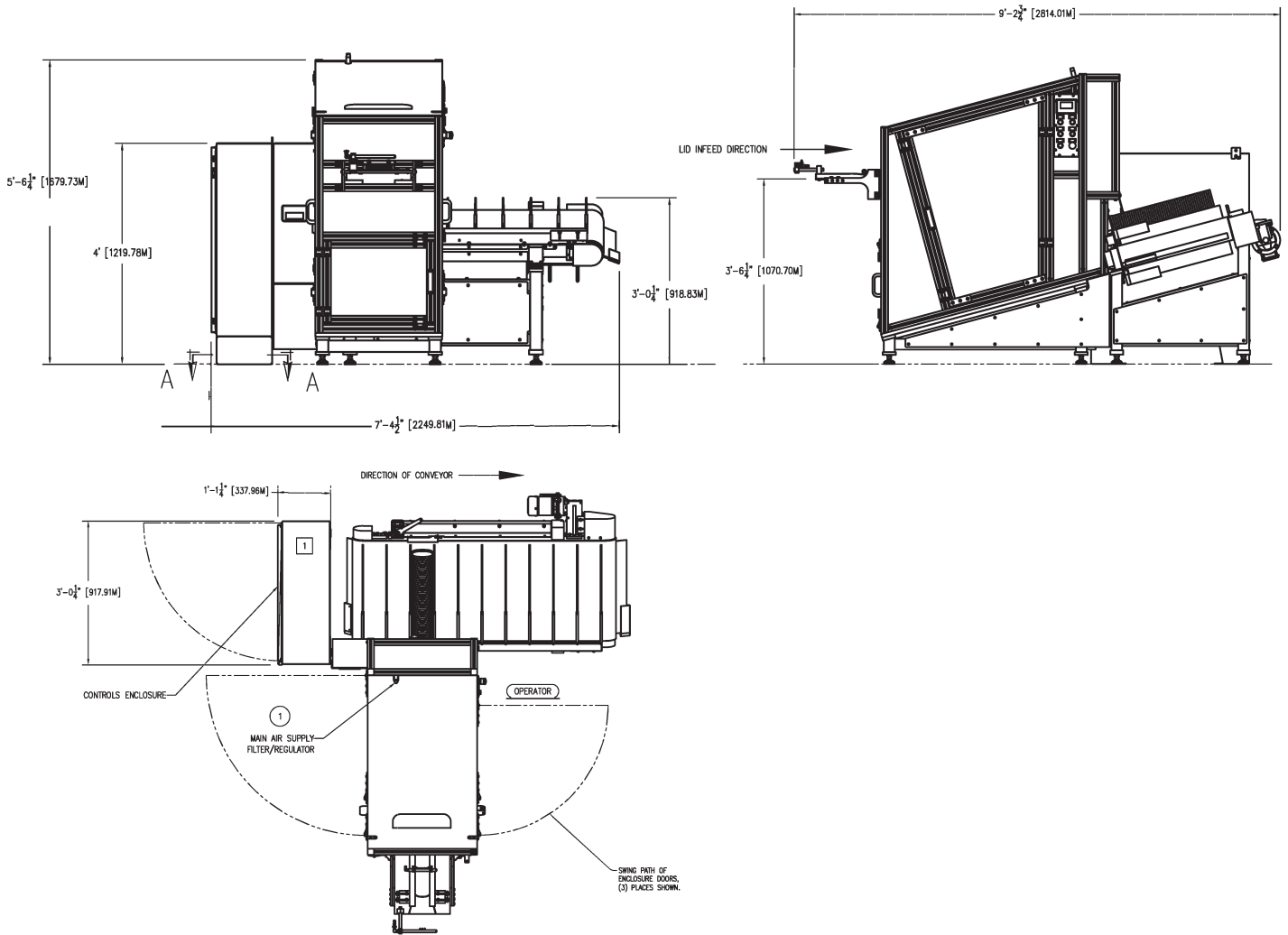
* Other lid heights available upon request.

KEY POINTS

- Stacks 1-piece and 2-piece lids to a customer input stack count.
- Stacks round or non-round lids.
- Compatible with 3rd party lid machines.
- VPN connectivity exists via direct connection with lid forming machine.

LID STACKING MACHINE

FLOOR PLAN



UTILITY REQUIREMENTS

ELECTRICAL	WATER	VACUUM	COMPRESSED AIR	VACUUM FOR BLANK FEEDER
3.5 kVA 3PH @ 60 HZ	N/A	N/A	17 SCFM @ 80 psi (0.5)	N/A



**PAPER
MACHINERY
CORPORATION**



**Do you have more questions?
Contact Us**

**Contact your dedicated Paper Machinery Corporation sales representative
for more information or to schedule a demonstration.**

p a p e r m c . c o m



8900 West Bradley Road | Milwaukee, WI 53224 USA

Tel: +1 414.354.8050

Email: sales@papermc.com

Follow us to keep up with the latest news



© Paper Machinery Corporation. 2024

The information presented in this document is for guide purposes only and are non-binding. Paper Machinery Corporation reserves the right to make changes to products and pricing without notice.