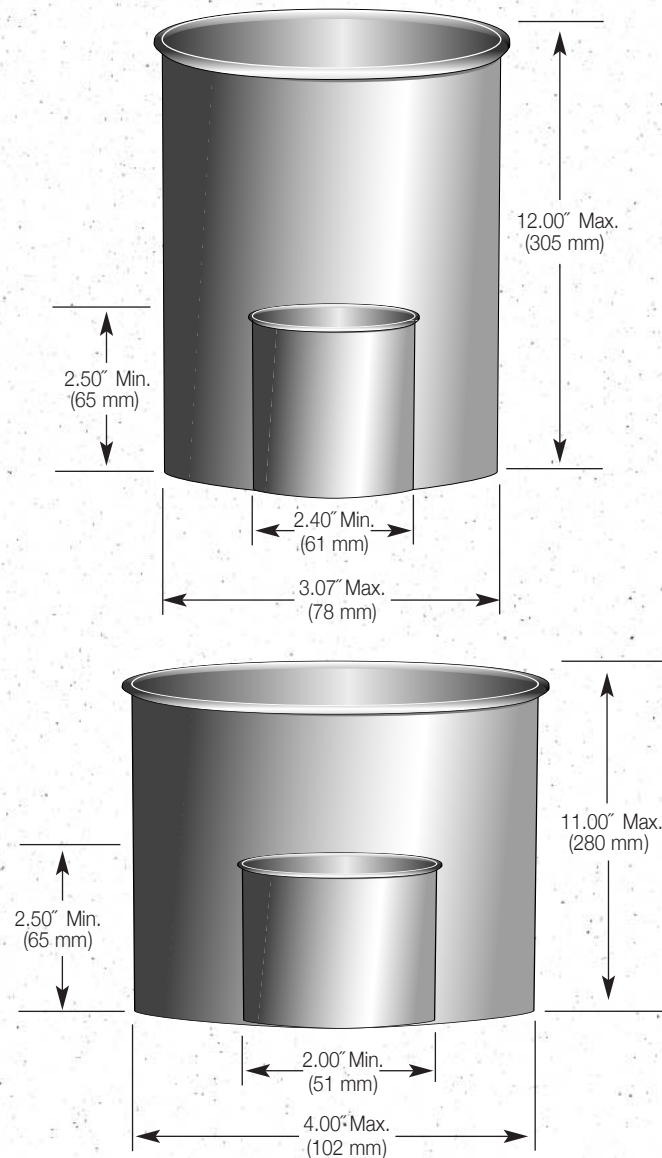


Features for Efficient Performance:

- **Variable - Speed Drive with PLC Controls**
allows machine speed to be automatically adjusted to downstream product demands.
- **User-Friendly Touch - Screen Display**
provides direct control of machine operation and easy monitoring of diagnostic and production data.
- **Cam - Actuated Machine & Station Functions**
ensure synchronized operation and efficient, repeatable container production.
- **Cycle Stop & Idle Mode Functions**
keep the machine running without wasting materials during breaks in downstream demand.
- **In - Line Production up to 125 CPM**
allows machine speed to accommodate downstream production demands.
- **Hot - Air Heat Sealing**
produces dependable, leak-resistant seals.
- **Standard Top Curl or Elongated Top Rim**
provides rigid hoop strength, accommodates snap-on lids, and makes container opening and reclosing easier.
- **Quick Height Change Tooling**
ensures efficient production of different size containers with minimal downtime.
- **On - Machine Coding**
provides for simple production tracking.
- **Splice - Detect Bottom Feeder**
skips splices in bottom roll stock to improve tooling life and machine uptime.
- **Gas - Fired Hot Air Sealing (Option)**
reduces utility costs and expands temperature range for sealing higher melt-point coatings.

The PMC 1250M Container Machine

Designed to Form Rigid, Recessed-Bottom, Round Convolute Canisters in a Variety of Sizes



*Dimensions outside above specifications will be reviewed on a case by case basis.



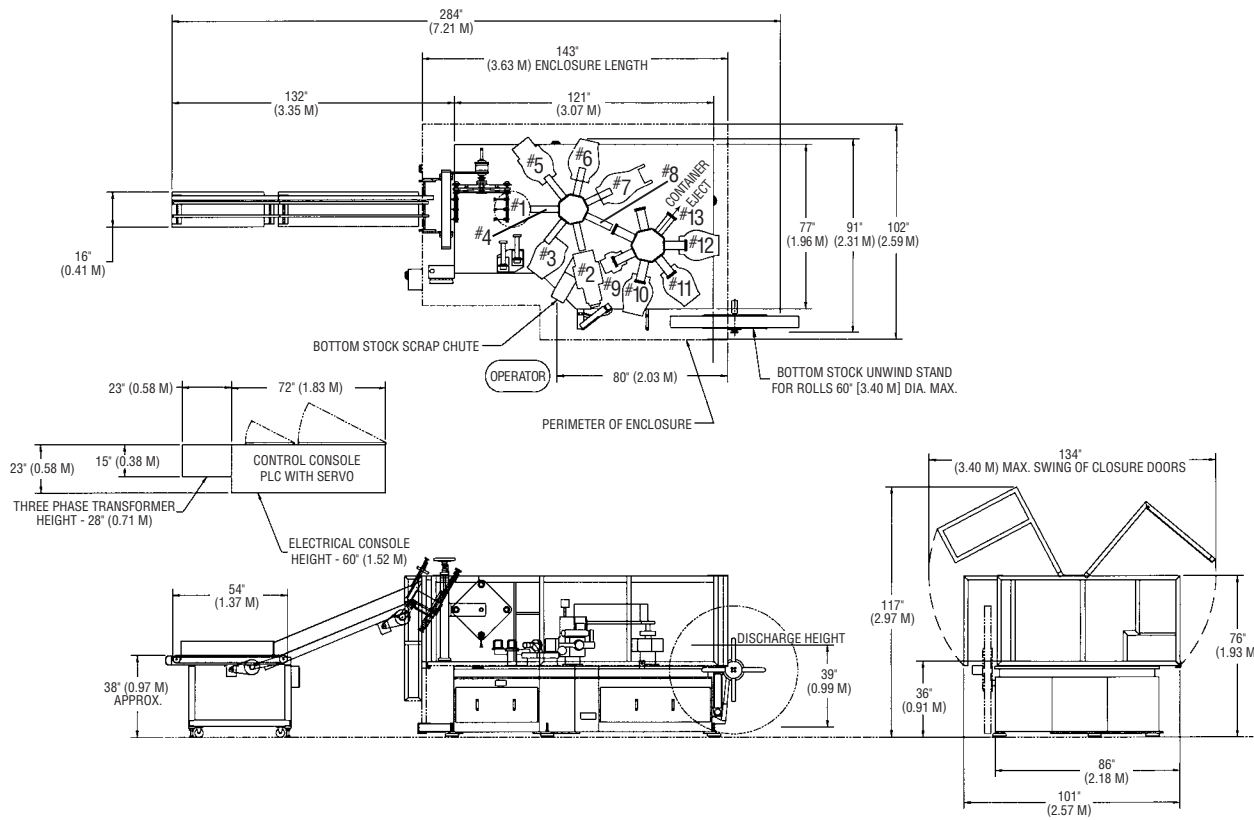
Paper Machinery Corporation

8900 West Bradley Road • Milwaukee, WI 53224
Phone (414) 354-8050 • FAX (414) 354-8614

President's E-Star Award



Continuous Excellence
in Export



Station Name

1. Blank Transfer Turret
2. Bottom Blanking and Forming
3. Bottom Reformer
4. Sidewall Blank Folding Wing
5. Bottom Heating
6. Bottom Incurl
7. Bottom Finishing
8. Transfer
9. Tamper/Lube
10. Rimming (Precurl)
11. Rimming (1st Curl)
12. Rimming (Finish Curl)
13. Container Eject

Machine Height
Max 117"
(2.98 m)

Discharge Height
39" (0.98 m)

Floor Plan

PMC 1250M Machine Specifications

Conversion Materials

Containers may be formed from preprinted, die cut sidewall blanks and web fed bottom stock. Preprinted or in-line printed sidewall roll stock may also be used. Materials must be one-side or two-side heat-sealable polyethylene coated paperboard. Foil or film laminates may be included. Curled top edge requires SBS cupstock with specific elongation, ply bond and moisture characteristics.

Approximate Machine Weight

Base Machine 21,000 lbs. (9525 kg) approx.
Electrical Cabinet 2,000 lbs. (907 kg) approx.
23,000 lbs.(10,432 kg) approx.

Paint Specifications

The machine is prime coated and painted with industrial grade primer and enamel. The standard color is cream with yellow guards and orange electrical shields and enclosures. Other colors are available on special order if specified at time of purchase.

Service Requirements

Electrical	Compressed Air*	Machine Vacuum*	Add Vacuum* for Blank Feeder	Water
90 kVA 3 PH @ 50 or 60 HZ	125 ft ³ /min @ 80 lb/inch ² or 0.060 m ³ /sec @ 5.6 kg/cm ²	100 ft ³ /min @ 18 inches Hg or 0.048 m ³ /sec @ 0.62 kg/cm ²	30 ft ³ /min @ 18 inches Hg or 0.014 m ³ /sec @ 0.62 kg/cm ²	0.5 gal/min @ 20 lb/inch ² or 1.9 liter/min @ 1.4 g/cm ²

*Volume flow rates listed are flow rates at standard conditions, 1.0 atmosphere and 68° F.

Supporting Technical Information

Installation floor plan, assembly drawings, electrical diagrams, parts list and maintenance and operation instruction manuals are furnished with the machine.

The PMC 1250M Container Machine

Forming taller containers to achieve more shelf impact!

- Consumers prefer the convenience of easy-to-open-and-close canisters
- The paperboard grain direction is vertical, which optimizes compression strength
- Vertical compression strength of canisters can reduce packing costs
- Package hoop strength reduces production line damage
- Recessed bottom canisters stack easily on retail shelves
- 1250M forming machines can produce heights ranging from 2.5 to 12 inches (65 to 305 mm)
- Bottom date coding easily achieved on the machine