

New Performance Features for the Fastest, Easiest Cup Production Ever:

Fully Re-Engineered with Advanced Features...

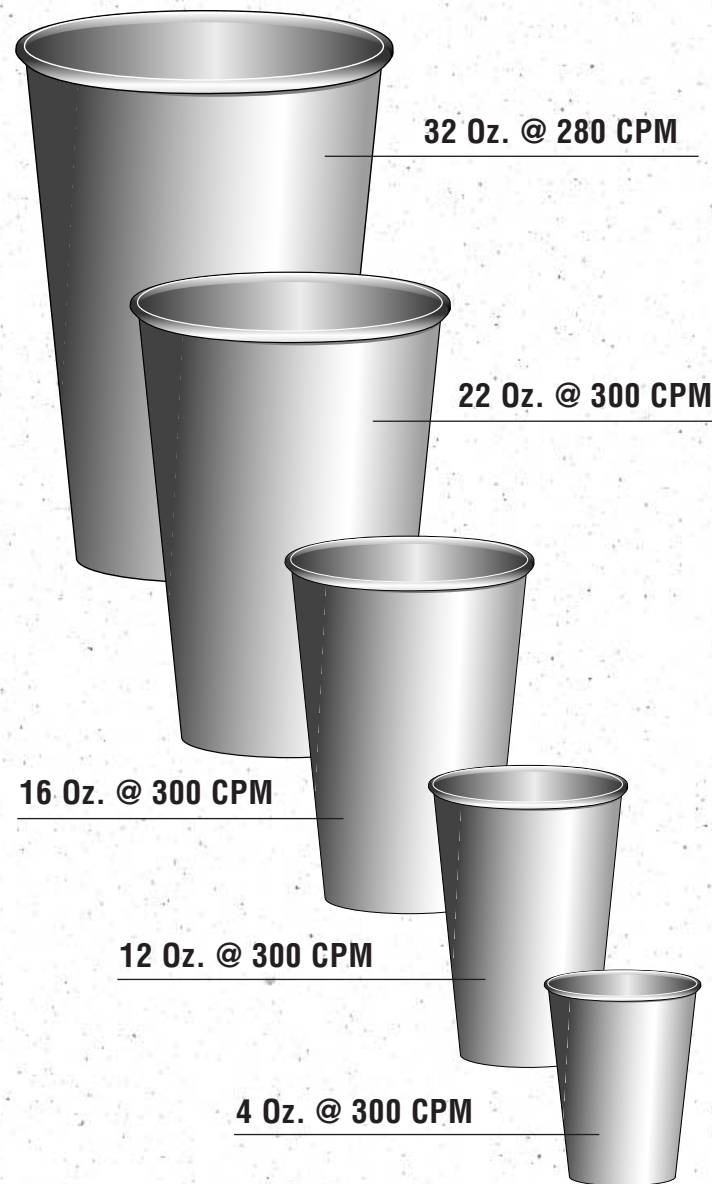
- Redesigned Bottom Drive Cams
- Fast Tooling Changeovers
- Manual Bottom Stock Splicing
- Bottom Roll Splice Bypass
- Single Side Enclosure
- High-Impact Polycarbonate Station Guarding
- Compact Bottom Roll Feeder

Designed to Deliver Faster, Easier, More Efficient Performance.

- Maximize machine speed.
- Let you switch cup size in just 6-8 hours.
- Can be done while the machine is running.
- Prevents punch unit from punching out a bottom on a splice.
- Provides easy access to the entire side of the machine.
- Is lightweight and easy to remove.
- Attached to the machine's end conserves floor space.

The PMC 1002 Cup Forming Machine

Providing Substantial Per Unit Cost Advantages Across the Full Range of Cup Sizes.



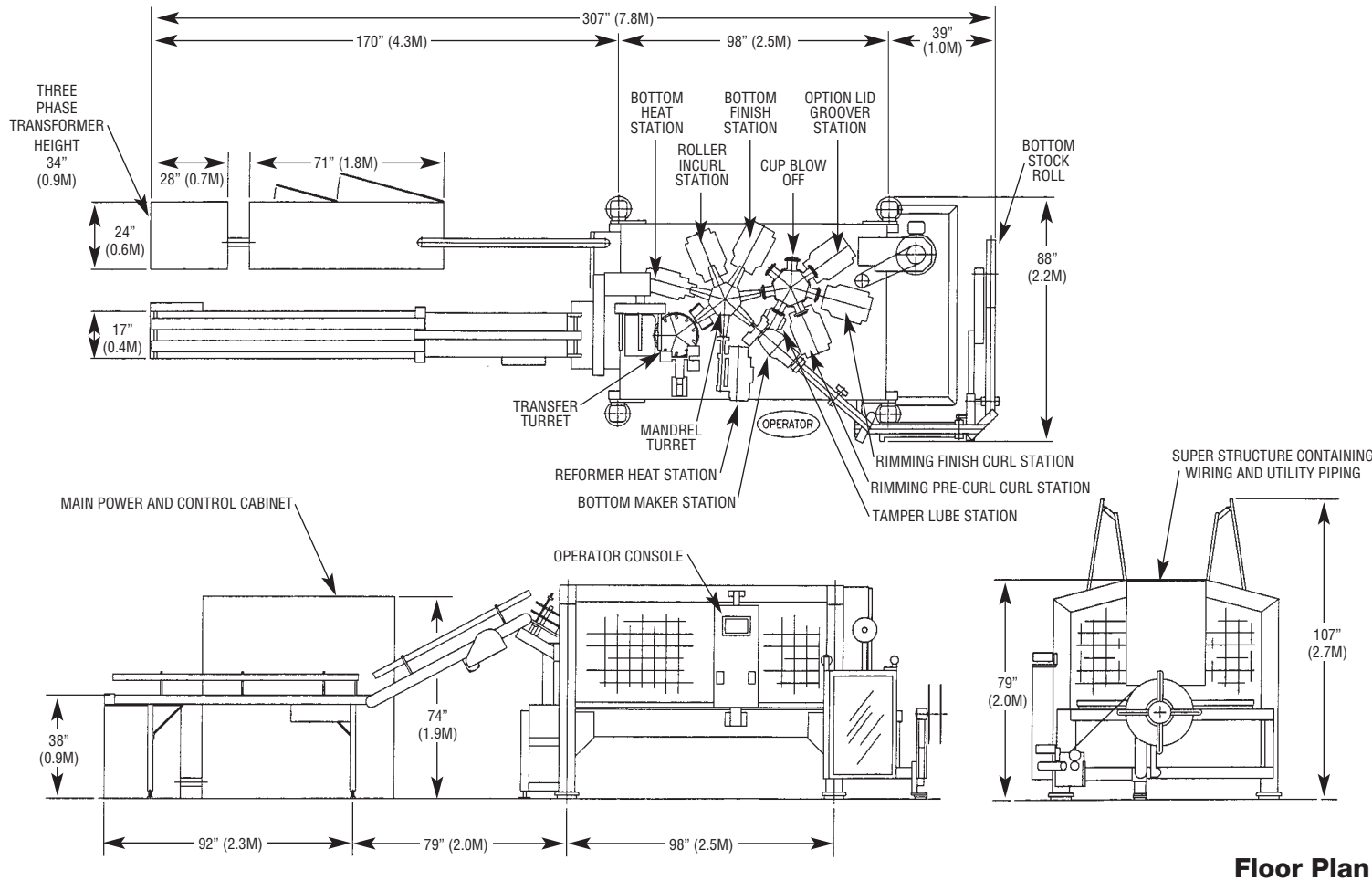
Paper Machinery Corporation

8900 West Bradley Road • Milwaukee, WI 53224
Phone (414) 354-8050 • FAX (414) 354-8614

President's E-Star Award



Continuous Excellence
in Export



Floor Plan

The PMC 1002 Cup Forming Machine

Delivering unprecedented speed that cuts production costs and raises profits.

- Design speed of 330 cups per minute
- Production speed of 300 cups per minute
- Higher speed range than the PMC 1001 at virtually the same price level
- Interchangeable tooling with the PMC 1001
- Reduced spare parts consumption
- Cycle start/stop
- Easy to read color touch screen

PMC 1002 Machine Specifications

Size Range

The PMC-1002 will produce drinking cups in capacities from 4 oz. (120cc) to 32 oz. (1000cc), other applications available on request.

Production Rates

Producing up to 300 cups per minute. The PMC-1002 is designed for continuous operation as a high production machine. Actual production rate will vary with product shape, size, and type of material.

Supporting Technical Information

Installation floor plan, assembly drawings, electrical diagrams, parts list and maintenance and operation instruction manuals are furnished with the machine.

Service Requirements

Electrical	Compressed Air*	Machine Vacuum*	Add Vacuum* for Blank Feeder	Water
100 kVA 3 PH @ 50 or 60 HZ	135 ft ³ /min @ 90 lb/inch ² or 0.064 m ³ /sec @ 6.3 kg/cm ²	20 ft ³ /min @ 18 inches Hg or 0.010 m ³ /sec @ 0.62 kg/cm ²	50 ft ³ /min @ 18 inches Hg or 0.024 m ³ /sec @ 0.62 kg/cm ²	0.5 gal/min @ 20 lb/inch ² or 1.9 liter/min @ 1.4 g/cm ²

*Volume flow rates listed are flow rates at standard conditions, 1.0 atmosphere and 68° F.

Specification #176, date: 2/1/04

Paper Machinery Corporation

P.O. Box 240100, 8900 W. Bradley Road, Milwaukee, Wisconsin 53224 USA
Telephone: (414) 354-8050 Facsimile: (414) 354-8614 www.papermc.com